



ART INSTALLATION SUITE

Located on the Hotel's first floor, the Art Installation Suite is a stylish, private function space ideal for private dining, cocktail parties & small meetings. Displayed on walls of exposed natural stone and rustic brick work are selected paintings from The Henry Jones collection of local Tasmanian artworks. A long modern balcony suspended outside the suite, overlooks The IXL Atrium—quite the place for pre-dinner drinks or a morning coffee before a breakfast meeting.

ROOM HIRE: \$450 for part day use
Saturday surcharge additional 50%
Sunday surcharge additional 100%

MINIMUM SPEND: \$1,250

DIMENSIONS
Total Area: 38.6m²
Height: 2.4m
Length: 9.2m
Width: 4.2m

Not available for evening functions with band or loud music.

EVENT VENUES

Cocktail

Banquet
(long table)

Boardroom

Theatre

Art Installation Suite

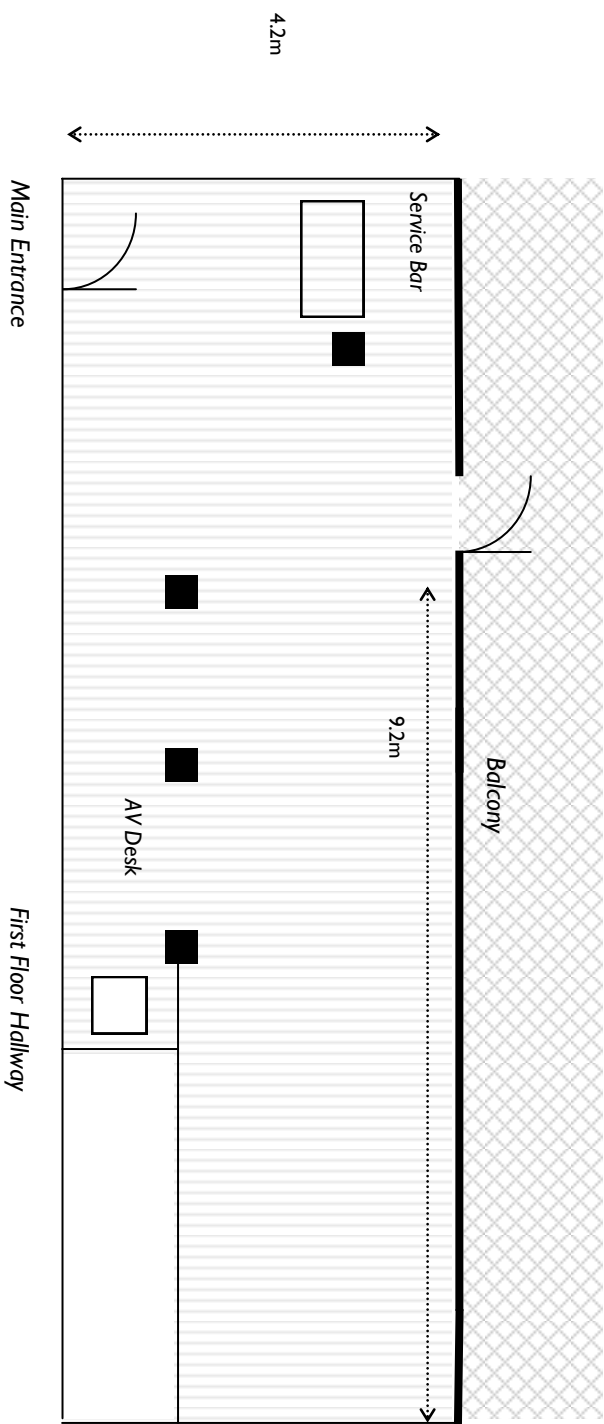
40

25

25

30

Art Installation Suite



ATRIUM COURTYARD

Located beneath the stunning glass canopy of the IXL Atrium, and framed by a pebbled water feature and original sandstone walls, the Atrium Courtyard is one of Tasmania's most striking events venues for smaller, intimate dinner gatherings and cocktail receptions. The Atrium Courtyard makes a simply perfect 'outdoor' setting - without being subject to the elements.

ROOM HIRE: \$500 for part day use
Saturday surcharge additional 50%
Sunday surcharge additional 100%

MINIMUM SPEND: \$2,500

As this space is used by Jam Packed Café this space is only available for day events with a minimum spend of over \$5k only.

Final rate subject to size, timing and nature of event.

This venue is not available for events with a band or loud music.

DIMENSIONS

Total Area: 100m²

Height: 9m

Length: 10m

Width: 10m

EVENT VENUE

Cocktail

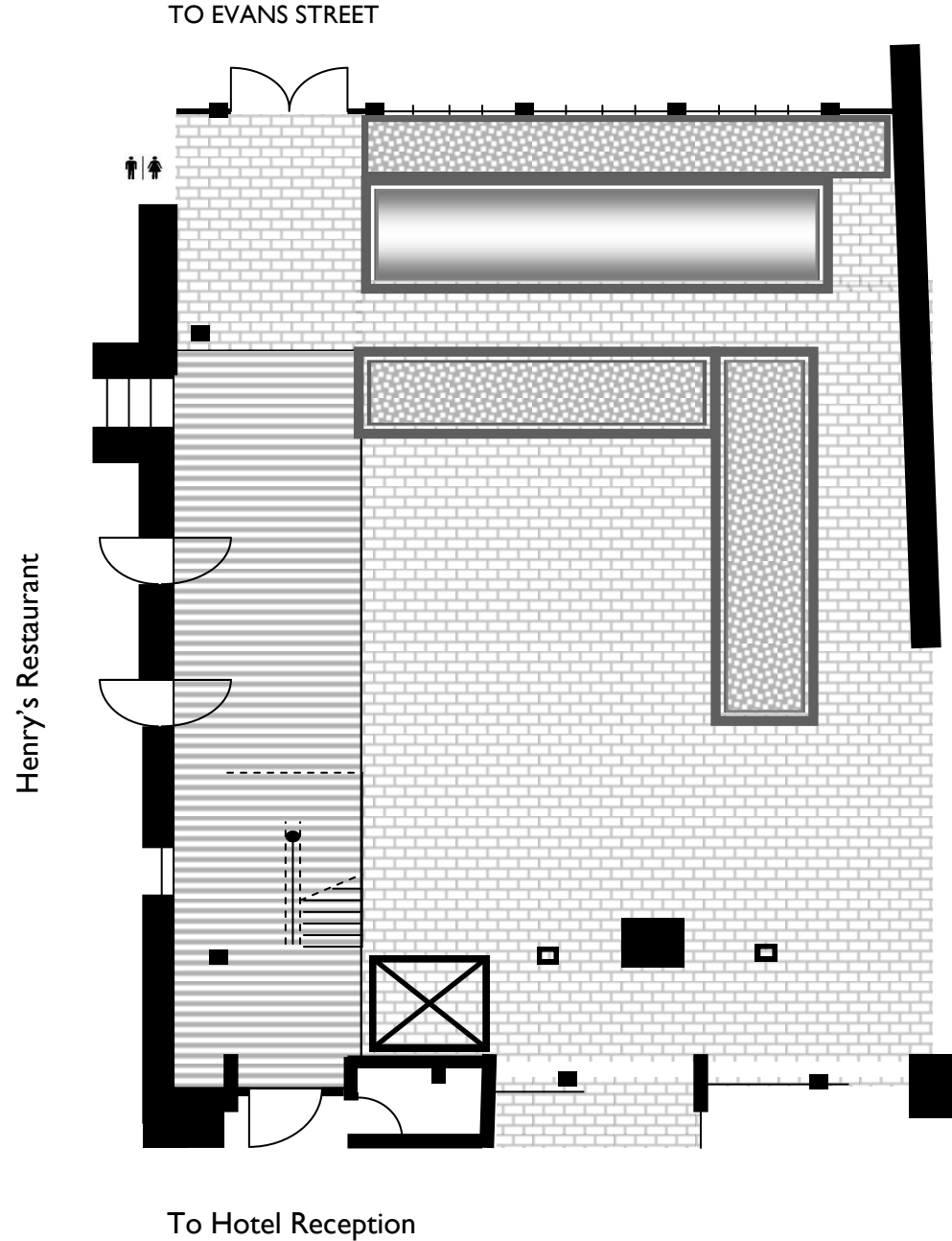
Atrium Courtyard

150

Guests must vacate the space by 21:30.



The Atrium
COURTYARD



IXL ATRIUM

At three storeys high, The IXL Atrium is one of the largest glass atriums in the Southern Hemisphere. This magnificent space provides the centrepiece to the surrounding complex, is sensitively integrated into the fabric of the original building and reveals glimpses of the old jam factory interior. The IXL Atrium is ideal for a range of events; from design and art installations, to a spectacular backdrop to your gala cocktail or dinner event. This is unquestionably Tasmania's most striking events space with a difference.

ROOM HIRE: \$5,000

MINIMUM SPEND: \$27,500 (food & beverage)

Should the event run past 21:30, the 16 surrounding accommodation rooms must be booked, these are offered at a reduced rate.

Access to the space is available from 2pm on the day of the event.

We strongly recommend hiring additional lighting for the space. The suggested bump

DIMENSIONS

Total Area: 264m²

Height: 9m

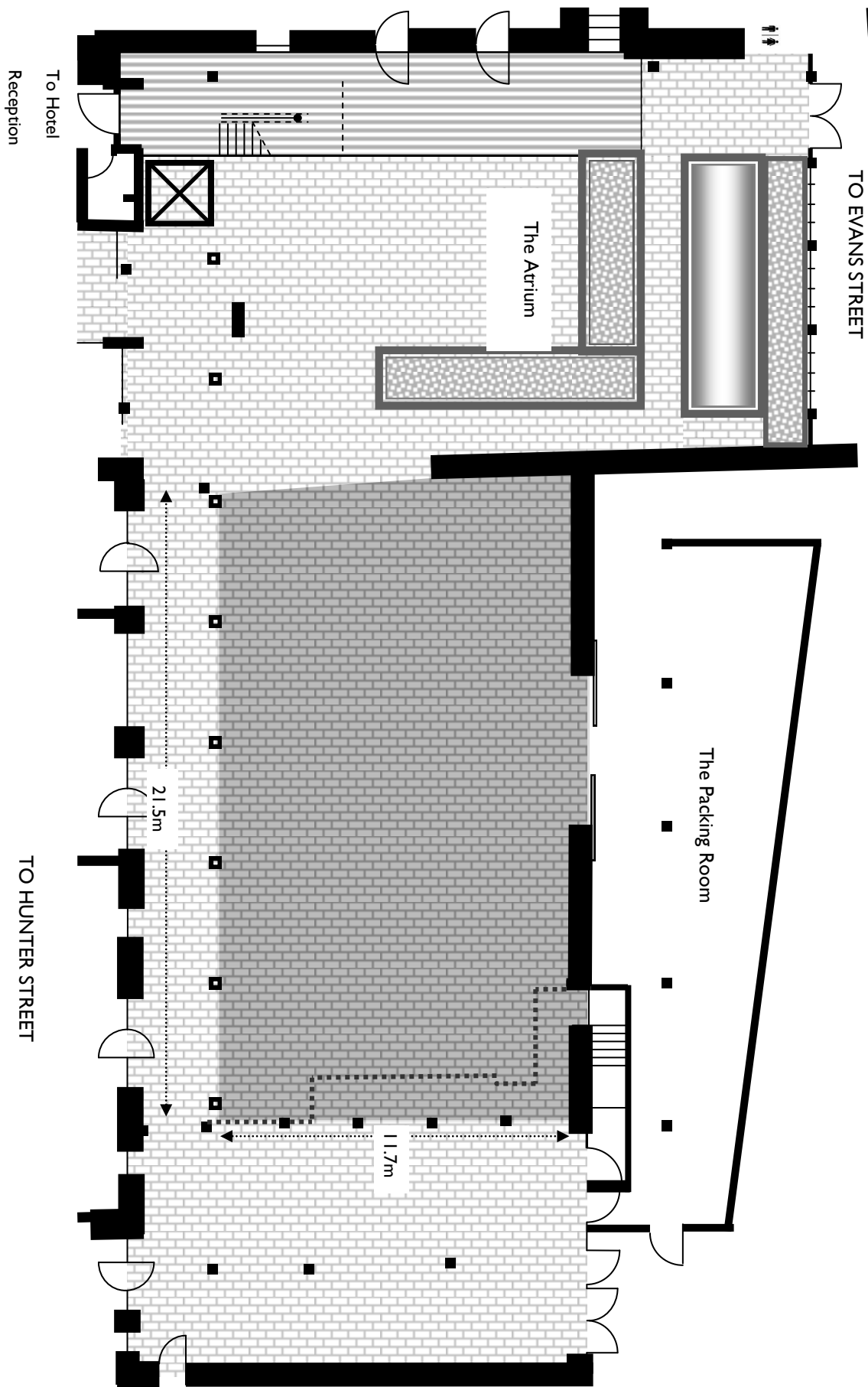
Length: 21.5m

Width: 11.7m

EVENT VENUES	Cocktail	Banquet (round tables)	Banquet (long tables)	Theatre
IXL Atrium	400	300	300	300



The IXL Atrium



JONES & CO. ROOM

The Jones & Co. is a majestic function room located on the Hotel's first floor and caters for meetings, private dining and special events. This room is Tasmania's finest venue for special occasions demanding a sophisticated ambience and stylish surrounds. Once the commercial hub of H. Jones & Co., an industrial empire with interests across five continents, The Jones & Co retains stunning original timber work and the rich history of a past era.

ROOM HIRE: \$750 for part day use
Saturday surcharge additional 50%
Sunday surcharge additional 100%

MINIMUM SPEND: \$4,000
Friday & Saturday evenings minimum spend \$10,000

For evening functions in the Jones & Co. room past 21:30 or with entertainment the three surrounding accommodation rooms must be booked, these are

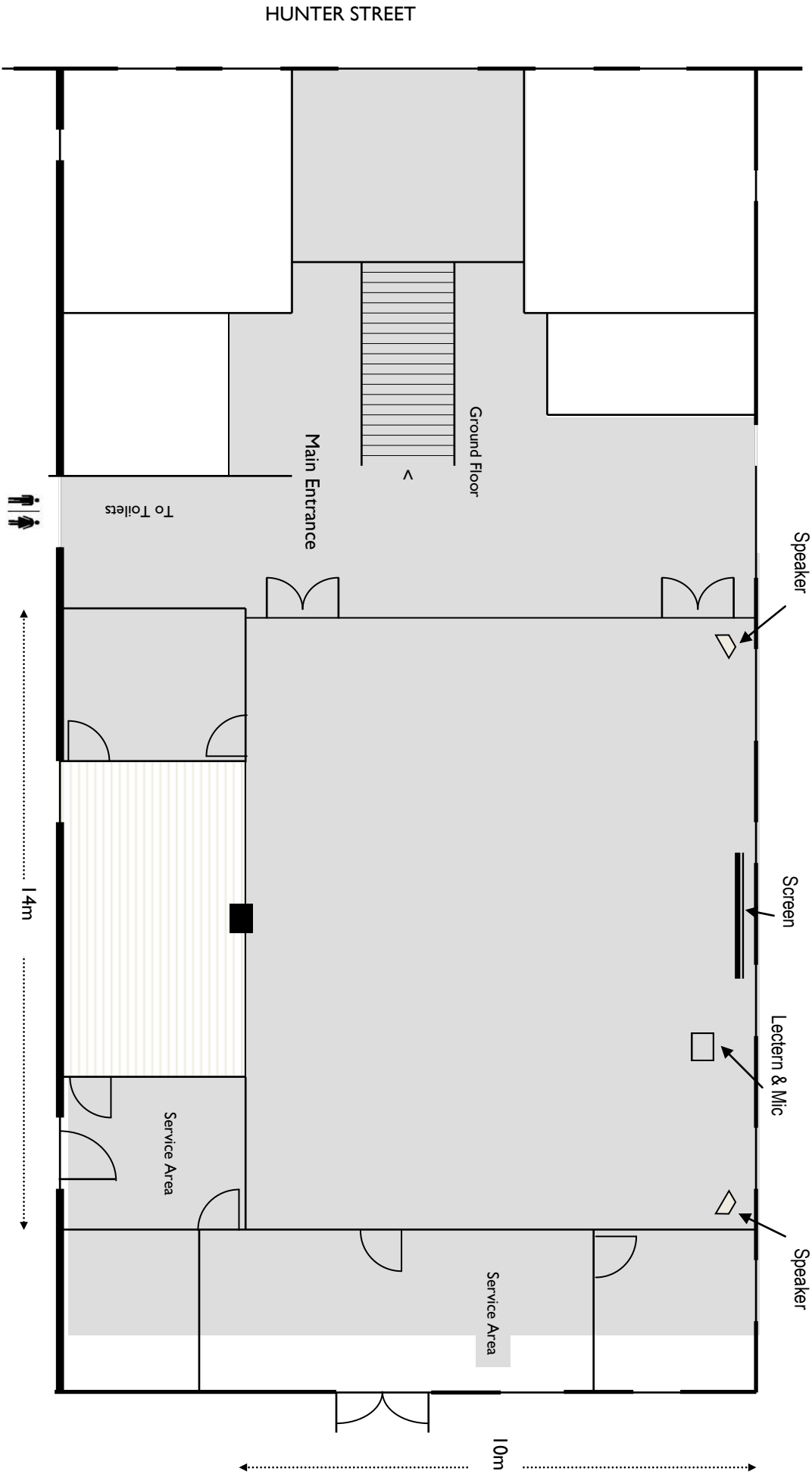
DIMENSIONS

Total Area: 180m²
Height: 5m
Clear Height: 3m
Length: 14m
Width: 10m

EVENT VENUE	Cocktail	Banquet (round tables)	Banquet (long tables)	Cabaret or Open-ended rounds	Theatre	U-Shape
Jones & Co. Room	180	120	140	96	140	40



Jones & Co Room Floor Plan



THE PACKING ROOM

This versatile space is located on the ground floor with access from the IXL Atrium. The venue can host your next special event whilst being a gallery showcasing Tasmanian Artists. This private function space is perfect for a breakout space for your conference, cocktail venue, meeting or dinner.

ROOM HIRE: \$500 for part day use
Saturday surcharge additional 50%
Sunday surcharge additional 100%

MINIMUM SPEND: \$1,500

Not available for evening functions with band or loud music.

Guests must vacate space by 21.30, unless otherwise arranged.

DIMENSIONS

Total Area: 145.6m²
Height: 2.64m
Length: 24m
Width: 4.5 - 6.5m

EVENT VENUE	Cocktail	Banquet (round tables)	Banquet (long tables)	Boardroom	Theatre
The Packing Room	100	60	40	40	60



The Packing Room

